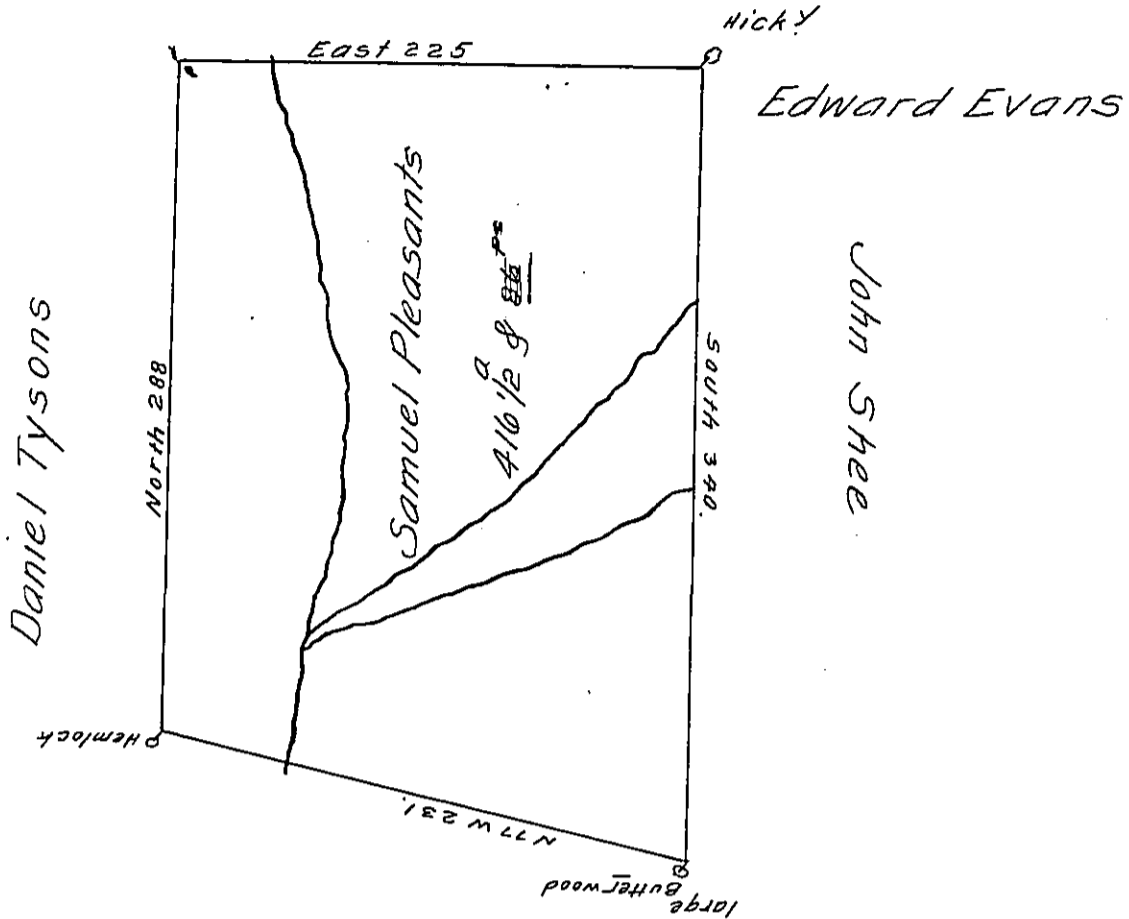


Hugh Howell



A Draught of a Tract of land Situated on a Part of the head
 Watters of Conemah - adjoining Lands of Edward Evans
 Containig four hundred and Sixteen Acres & 86 # with the
 usual allowance of Six #^t Cent for Roads &c^o. Surveyed the
 24th day Oct^r 1786 In Pursuance of a Warrant Dated the 27th
 Aug^t 1784.

W^t N^o 47

George Woods D.S

IN TESTIMONY that the above is a copy of the original remaining on file in
 the Department of Internal Affairs of Pennsylvania, made
 conformably to an Act of Assembly approved the 16th day of
 February, 1833, I have hereunto set my Hand and caused
 the Seal of said Department to be affixed at Harrisburg,
 this eleventh day of October 1910.

Henry Horvick

Secretary of Internal Affairs.